



**CENTRAL MAINE  
POWER**

## CENTRAL MAINE POWER East Wilton Distribution Substation

### CONTACT

Project Information Line: **888.267.0831**

Refer to: **East Wilton Distribution Substation**

Website: **[cmpco.com/reliabilityprojects](http://cmpco.com/reliabilityprojects)**

### PROJECT OVERVIEW

Central Maine Power, in conjunction with its parent company AVANGRID, is undertaking a multi-year effort to upgrade or replace 10 distribution substations throughout its service territory that are aged and/or have condition or capacity issues in need of attention.

This significant investment in communities large and small is part of our commitment to provide safe, reliable service to all of our customers.

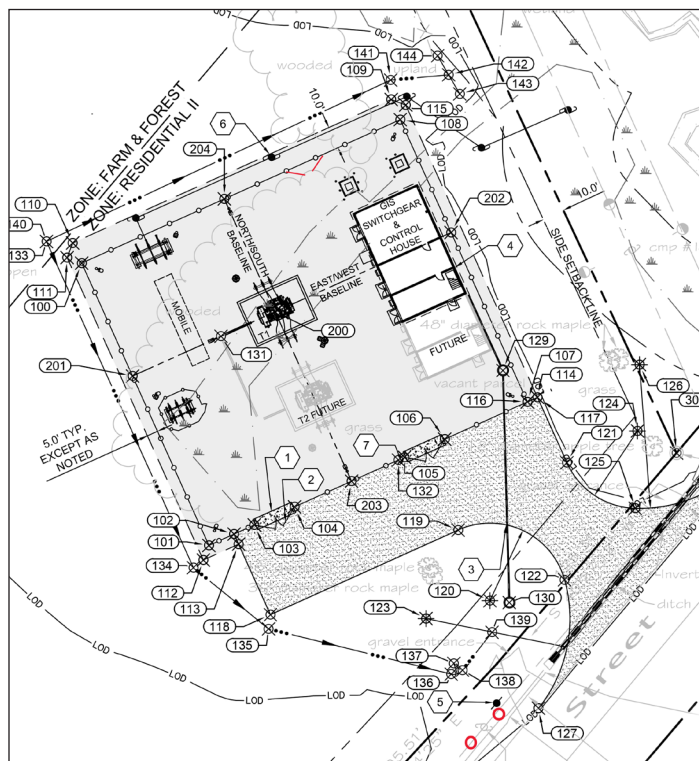
As part of CMP's Substation Modernization Plan, a new distribution substation would be built at 1228 Main Street in East Wilton to replace an existing substation to the east of it on Temple Road in Wilton, and would connect to the same transmission line.

Once the new substation is completed and on-line, the existing substation in a residential neighborhood will be demolished and grass will be planted in its place.

### PROJECT PURPOSE AND NEED

The existing electric distribution substation on Temple Road was built in the mid-1900s on wood poles that now are significantly leaning. They pose a safety and system reliability risk.

The current location does not have the space for the construction and installation of newer substation equipment which is needed for modern day operation that meets AVANGRID and National Electrical Safety Code (NESC) standards.



### PROJECT FACTS

Municipalities:	Wilton
County:	Franklin
Permitting Required:	Federal – U.S. Army Corps of Engineers State – Maine Department of Environmental Protection Natural Resource Protection Act and stormwater permits; the Maine Historic Preservation Association project review process Municipal – The Town of Wilton Planning Board



*Left: The distribution substation on Temple Road was constructed on wood poles that are aged, leaning, and posing a significant reliability and safety risk. Right: Central Maine Power is proposing that a new substation be constructed in East Wilton on property that will allow it to be connected to the nearby transmission line.*

#### **PROJECT SCOPE INCLUDES:**

All components of the substation will be enclosed behind security fencing and within a locked control house that will be video monitored by CMP's control center. Lights will be placed on the building, but will turn on only when their sensors are activated or when emergency crews are working at the location.

#### **THE FOLLOWING COMPONENTS WILL BE CONSTRUCTED AND INSTALLED AT THE NEW EAST WILTON LOCATION:**

- New 34kV structure with new switches, bus, insulators and voltage transformers.
- New line breakers, transformer breakers, distribution feeder breakers and foundations.
- New transformer and foundation with oil containment.
- New 12kV structure with new switches, bus, insulators and voltage transformers.
- New control house and foundation.

#### **BENEFITS TO THE REGION**

- An improved reliability and safety substation to meet customers' electricity needs.
- Capacity to provide electricity for economic development and growth.
- Increased tax revenue.

#### **ESTIMATED TIMETABLE** *(subject to change)*

Permitting Approvals:	August 2019
Construction:	June 2020
Estimated In-Service Date:	Late 2020